



## **Installation Guide of iConsole WM**

Doc version v3.0

### Prerequisites:

- Windows 7 SP1, 8, 8.1 or 10, Windows Server 2008 SP2, 2008 R2 SP1, or 2012
- Administrator right of the computer
- SAP user account with remote function call authorization
- Network connection to SAP server
- Network connection to iPhone or iPod Touch device

### Steps:

- I. Install IIS
- II. Install .NET Framework
- III. Create folders for the installation
- IV. Create IIS Web Sites
- V. Enable 32-bit Applications
- VI. Allow HTTP connection in Firewall
- VII. Extract the package
- VIII. Enter SAP connection parameter
- IX. Test the iConsole and the connection to SAP
- X. Test the connection from iPhone/iPod Touch to iConsole

## Install IIS

### Windows 7:

1. Start Menu -> Control Panel -> Programs -> Programs and Features
2. Click Turn Windows features on or off
3. Select the feature Internet Information Services
4. Click OK. This will install the IIS

### Windows 8:

1. Search for Control Panel -> Open Control Panel -> Programs -> Programs and Features
2. Click Turn Windows features on or off
3. Select the feature Internet Information Services
4. Click OK. This will install the IIS

### Windows 10:

1. Settings -> Search for Windows Features
2. Click Turn Windows features on or off
3. Select the feature Internet Information Services
4. Click OK. This will install the IIS

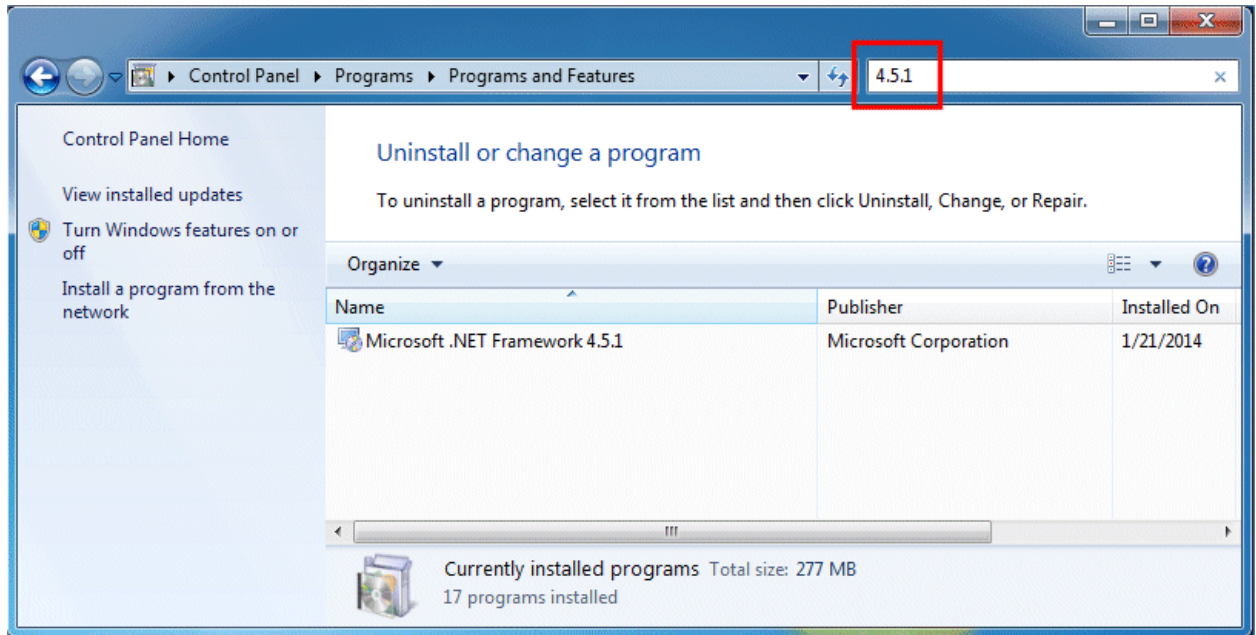
### Windows Server 2008 and 2012:

1. Launch Server Manager -> Roles
2. If Web Server (IIS) is not an existing role of the server, click Add Roles
3. Select Web Server (IIS) and click Install

## Check .NET Framework

Windows 7 and Windows Server 2008:

1. Start Menu -> Control Panel -> Programs -> Programs and Features
2. Check if .NET Framework 4.5.1 is installed



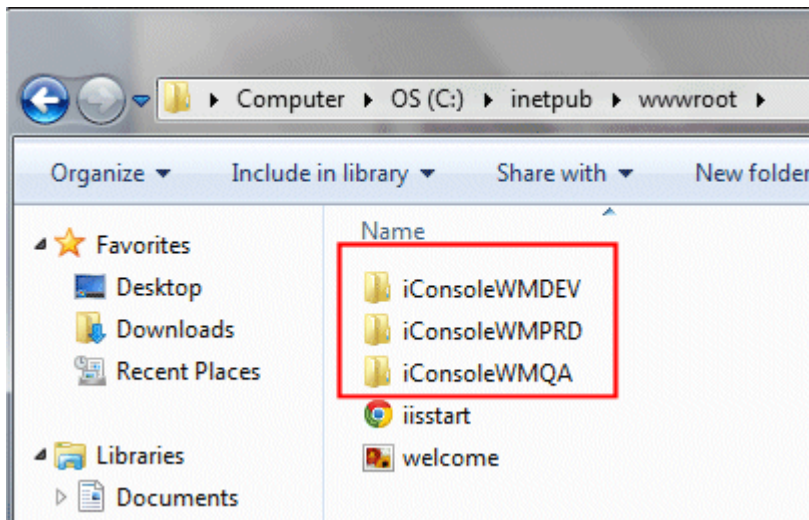
3. If not, download and install the .NET Framework 4.5.1 from Microsoft  
<http://www.microsoft.com/en-us/download/details.aspx?id=40779>

Windows 8:

1. Search for Control Panel -> Open Control Panel -> Programs -> Programs and Features
2. Check if .NET Framework 4.5.1 is installed
3. If not, download and install the .NET Framework 4.5.1 from Microsoft  
<http://www.microsoft.com/en-us/download/details.aspx?id=40779>

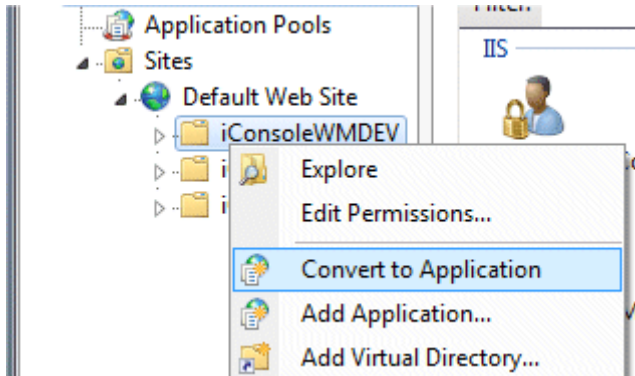
## Create folders for the installation

1. Launch a Windows Explorer
2. Go to folder C:\inetpub\wwwroot (Go to the root folder of your IIS server if you moved it to other folder)
3. Assuming you have 3 SAP instances: DEV, QA and PRD. Create a folder for each SAP instance
  - iConsoleWMDEV
  - iConsoleWMQA
  - iConsoleWMPRD



## Create IIS Web Sites

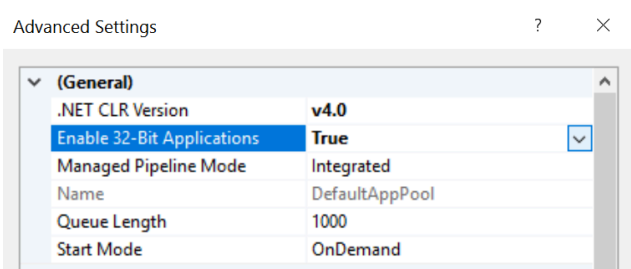
1. Start Menu -> Search for program "inetmgr"
2. Expand the tree under the computer name
3. Right click the folder iConsoleWMDEV under Default Web Site. Select Convert to Application



4. Click OK to confirm
5. Repeat the above for the iConsoleWMQA and iConsoleWMPRD folders

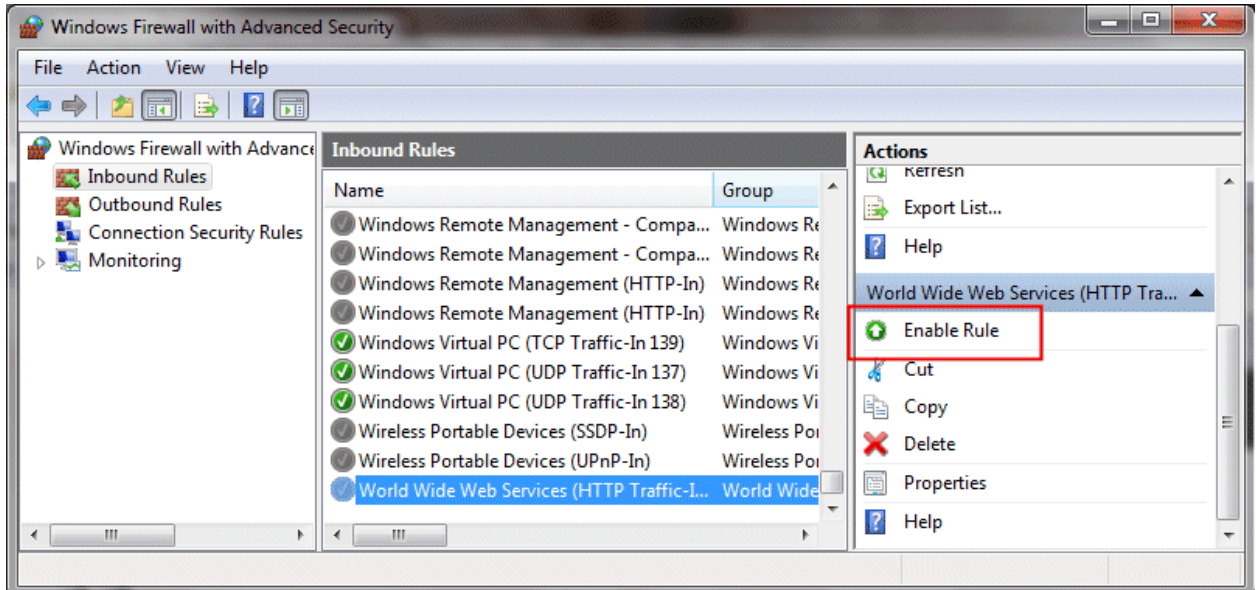
## Enable 32-bit Applications

1. Select Application Pools in IIS Manager
2. Select the DefaultAppPool
3. Click Advanced Settings on the right side
4. Set Enable 32-Bit Applications to True



## Allow HTTP connection in Firewall

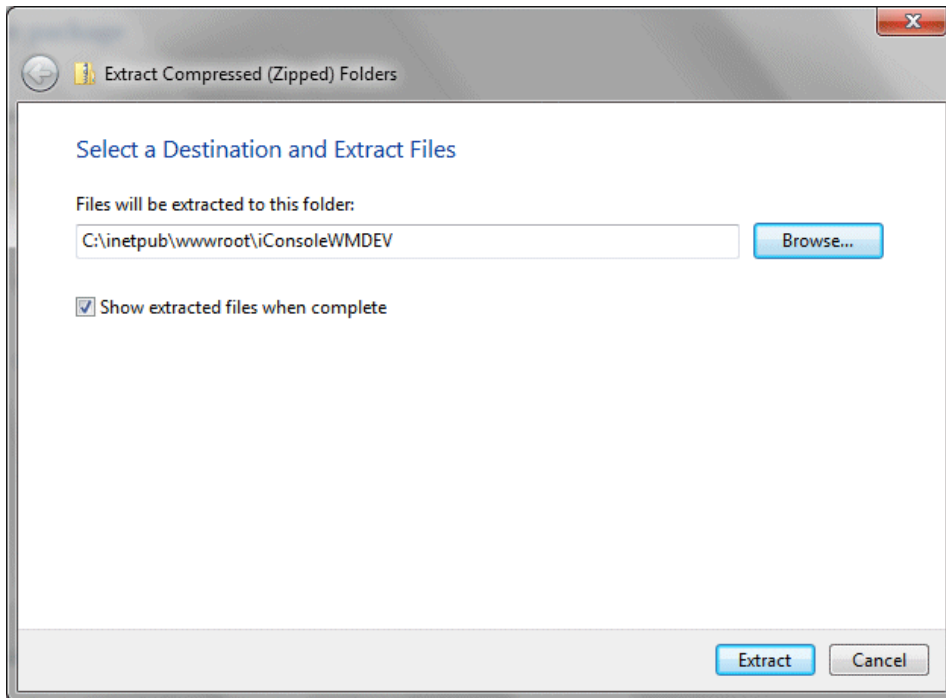
1. Start Menu -> Control Panel -> System and Security -> Windows Firewall
2. Click Advanced settings on the left
3. Select Inbound Rules on the left



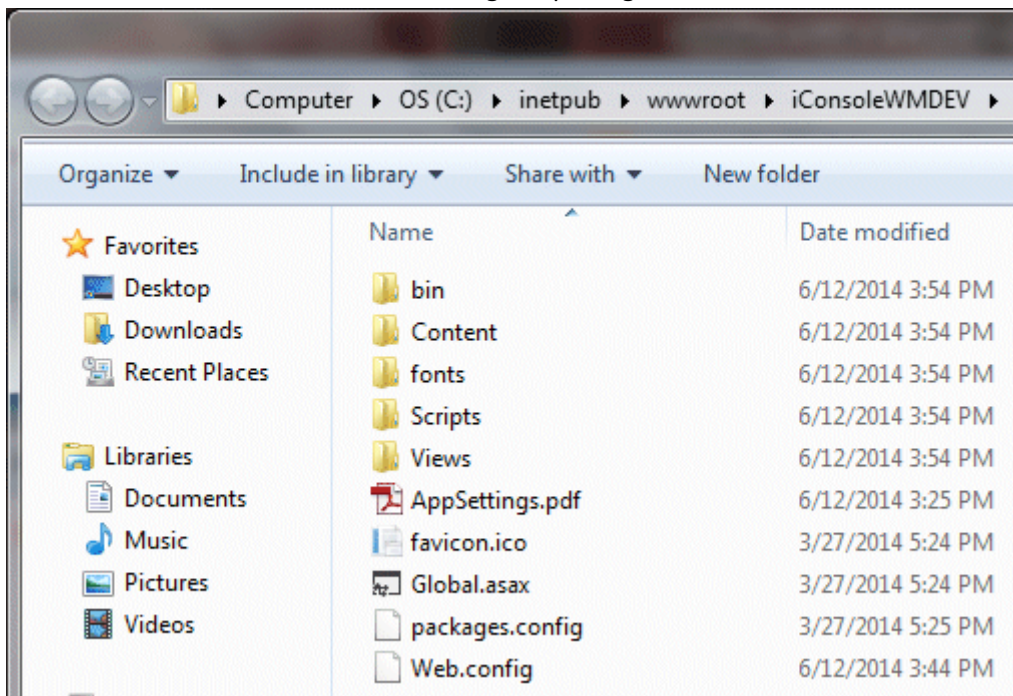
4. Scroll to the bottom and select World Wide Web Services
5. Click Enable Rule on the right

## Extract the package

1. Extract the iConsoleWM package to each of the folders created above



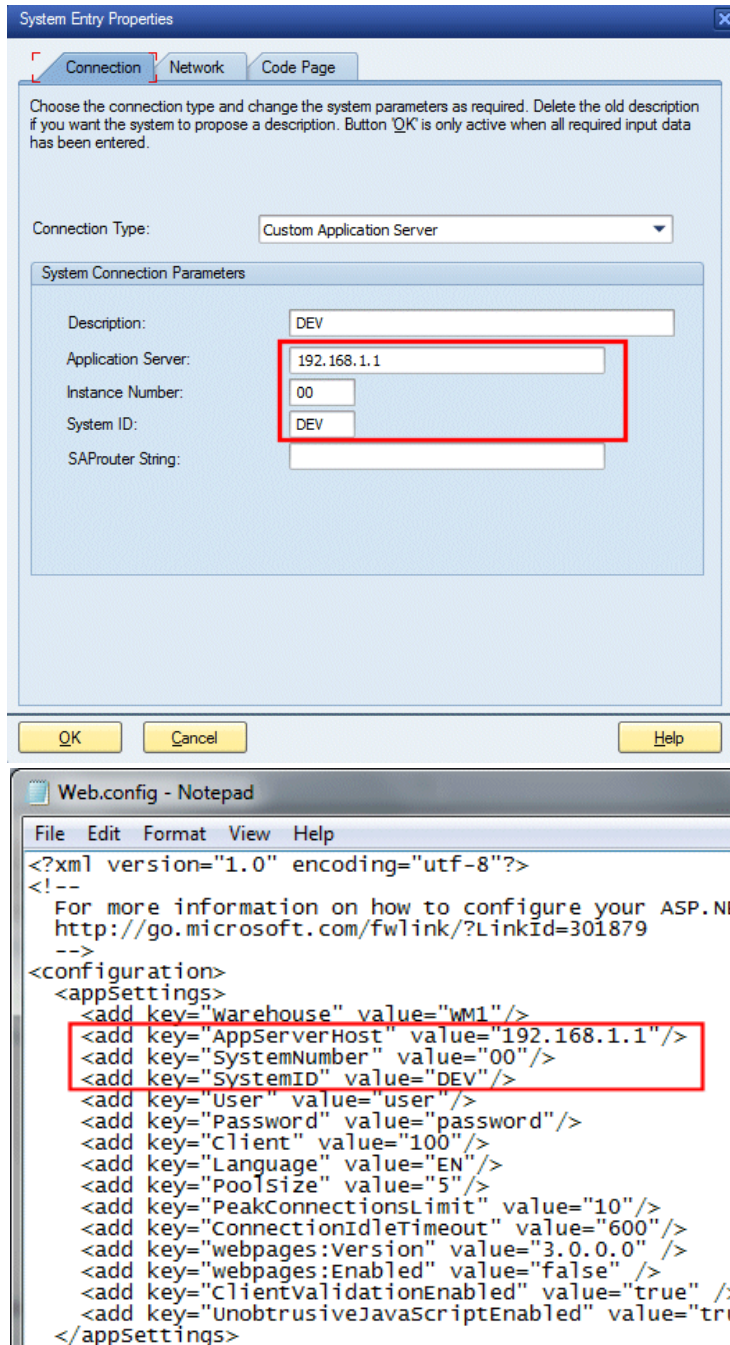
2. The folder look the below after extracting the package



3. Repeat the steps for the iConsoleWMQA and iConsoleWMPRD folders

## Enter SAP connection parameters

1. Open the file Web.config with a text editor (e.g. notepad).
2. Maintain the values of the connection parameters with reference to the SAP Logon



3. Maintain the values of the user parameters with reference to the logon screen

User System Help

SAP

New password

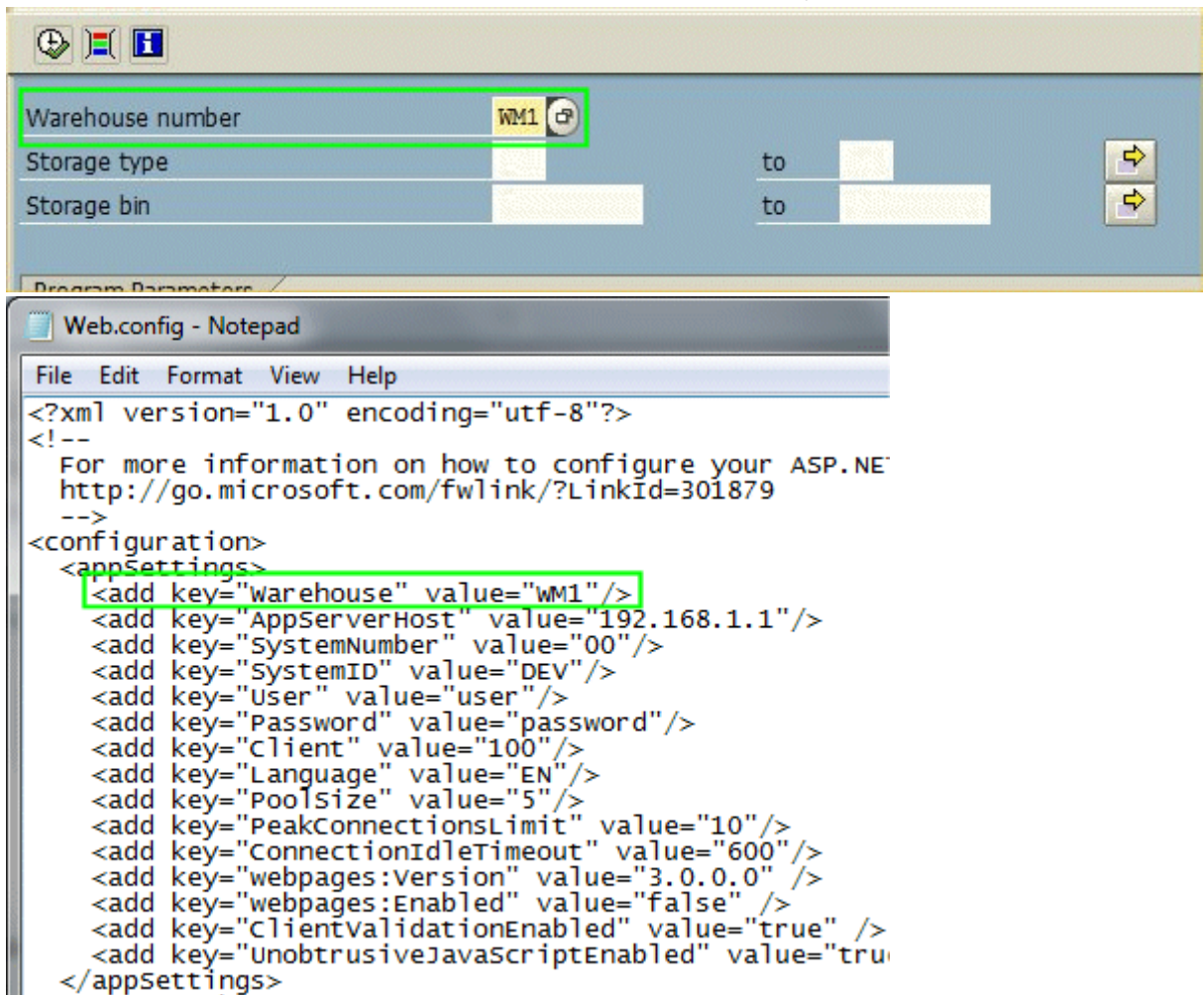
Client	100
User	user
Password	*****
Logon Language	EN

Web.config - Notepad

File Edit Format View Help

```
<?xml version="1.0" encoding="utf-8"?>
<!--
  For more information on how to configure your ASP.NET
  http://go.microsoft.com/fwlink/?LinkId=301879
-->
<configuration>
  <appSettings>
    <add key="warehouse" value="wm1"/>
    <add key="AppServerHost" value="192.168.1.1"/>
    <add key="SystemNumber" value="00"/>
    <add key="SystemID" value="DEV"/>
    <add key="user" value="user"/>
    <add key="Password" value="password"/>
    <add key="Client" value="100"/>
    <add key="Language" value="EN"/>
    <add key="PoolSize" value="5"/>
    <add key="PeakConnectionsLimit" value="10"/>
    <add key="ConnectionIdleTimeout" value="600"/>
    <add key="webpages:Version" value="3.0.0.0" />
    <add key="webpages:Enabled" value="false" />
    <add key="ClientValidationEnabled" value="true" />
    <add key="UnobtrusiveJavaScriptEnabled" value="true" />
  </appSettings>
</configuration>
```

4. Maintain the warehouse number with reference to the screen of any warehouse transaction



5. Save the file Web.config
6. Repeat the steps for QA and PRD systems

## Test the iConsole and the connection to SAP

1. Launch Internet Explorer
2. Type the URL: <http://localhost/iConsoleWMDEV>

# iConsole WM

iConsole is the middleware between SAP and iRF App.

*Steps:*

### 1. Connect iConsole to SAP

Congratulations! Thank you for installing iConsole. Please test the SAP connection is working

[Test the Connection >>](#)

### 2. Optional Features

To enjoy the full features of iRF WM, please follow the guides below to enable them

[Pick and Pack »](#)

[Loading and Unloading »](#)

### 3. Download the Apps

Check out the iRF WM and iRF Pick on App Store. The Apps are free. Use them on as many iOS devices as you want

[iRF WM »](#) [iRF Pick »](#)

### 4. Connect the App to iConsole

Your are just one step away from our iRF for SAP solutions. Enter the URL of iConsole in the App Settings

[Learn More »](#)

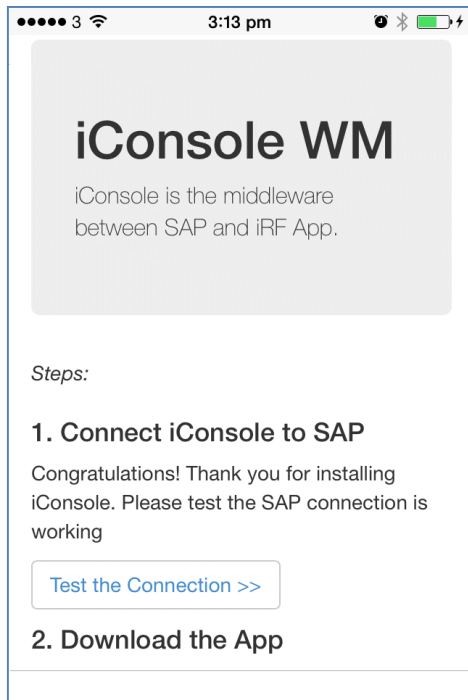
---

© 2017 - iConsole WM v 3.0.0

3. Test the SAP connection by clicking the button [Test the Connection] there.
4. Repeat the test for QA and PRD systems

## Test the connection from iPhone/iPod Touch to iConsole

1. Check the hostname or IP address of the computer running the iConsole
2. Launch the Safari on the iPhone/iPod Touch
3. Type the URL: `http://<hostname or IP address>/iConsoleWMDEV`



4. Test the SAP connection by clicking the button [Test the Connection] there.
5. Repeat the test for QA and PRD systems